

FLOOR PLAN  
1/8" = 1'-0"

DOOR SCHEDULE							
No.	SIZE			TYPE	MATERIAL	FINISH	FRAME
	WIDTH	HEIGHT	THICK.				
1	3'-0"	6'-8"	1-3/4"	A	ALUM./GL.	FACTORY	ALUM.
2				B	WD. SC.	STAIN	H.M.
3							
4							
5							
6				C	H.M.	PAINT	
7				C	H.M.	PAINT	
8				C	H.M.	PAINT	
9	12'-0"	14'-0"		D	H.M.	PAINT	
10				MTL.	FACTORY		
11							
12							
13							
14							
15							
16							
17							
18	3'-0"	6'-8"	1-3/4"	C	H.M.	PAINT	H.M.
19							
20				B	WD. SC.	STAIN	

DOOR HARDWARE: HANDLES, PULLS, LATCHES, LOCKS AND OTHER OPERATING DEVICES ON ACCESSIBLE DOORS SHALL HAVE LEVER-OPERATED MECHANISMS PER F.L.A. ACCESSIBILITY CODE 4.13.3

HARDWARE FINISH: SELECTED BY OWNER

NOTE: DOOR HANDLES SHALL BE LEVER TYPE FOR H.C. ACCESSIBILITY

METAL BLDG. EXTERIOR DOORS BY CONTRACTOR, DOOR TRIM BY BLDG. MANUFACTURER

GARAGE / OVERHEAD DOORS SHALL BE CAPABLE OF WITHSTANDING POSITIVE AND NEGATIVE WIND PRESSURES AS DETERMINED BY SBC 1606.

EACH ASSEMBLY SHALL BE TESTED FOR A TIME PERIOD EQUAL TO THE QUANTITY 3600 / V, WHERE THE TIME PERIOD IS IN SECONDS AND V IS IN MILES PER HOUR TAKEN FROM FIGURE 1606. THE TIME PERIOD SHALL INCLUDE A 10 SECOND PERIOD AT A LOAD EQUAL TO 15 TIMES THE DESIGN PRESSURE. (SBC 1991 EDITION 1207.4)

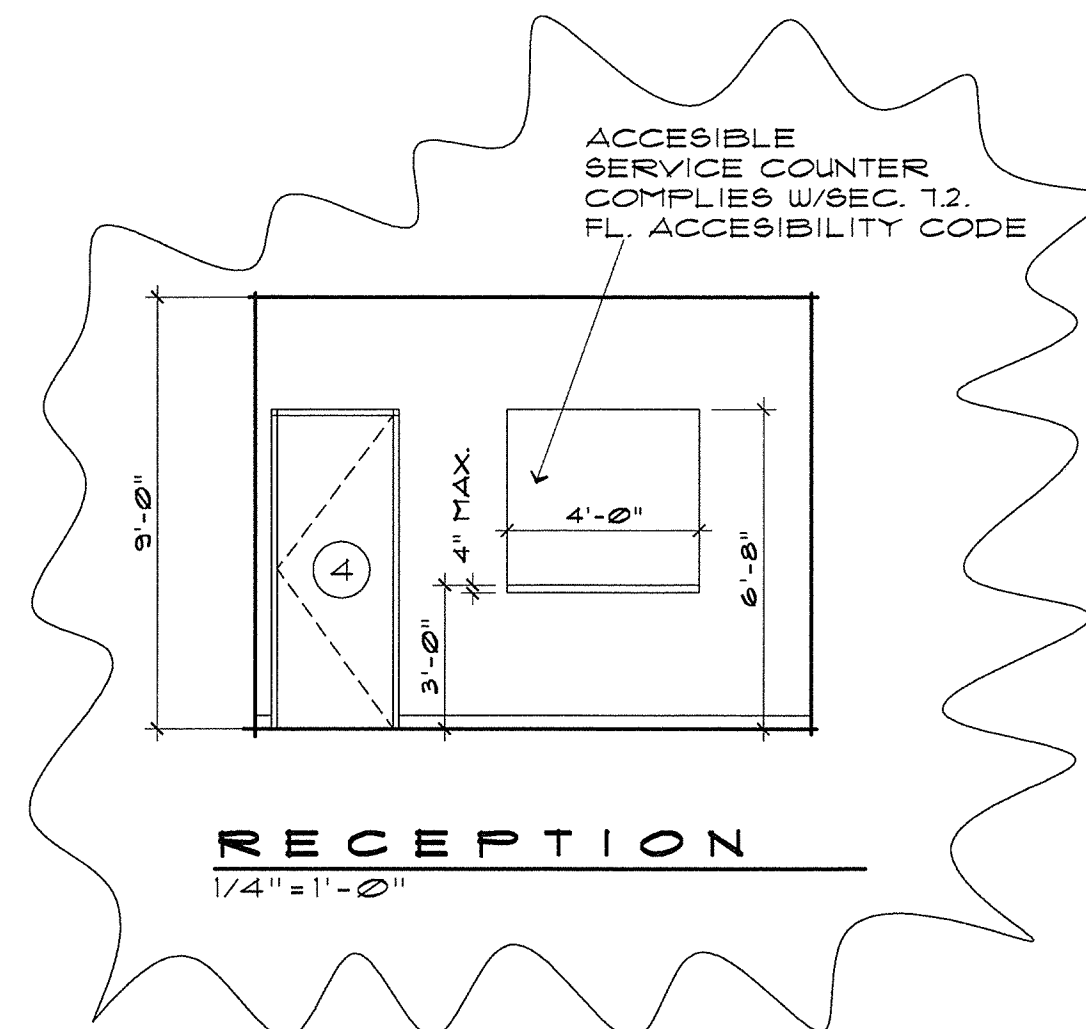
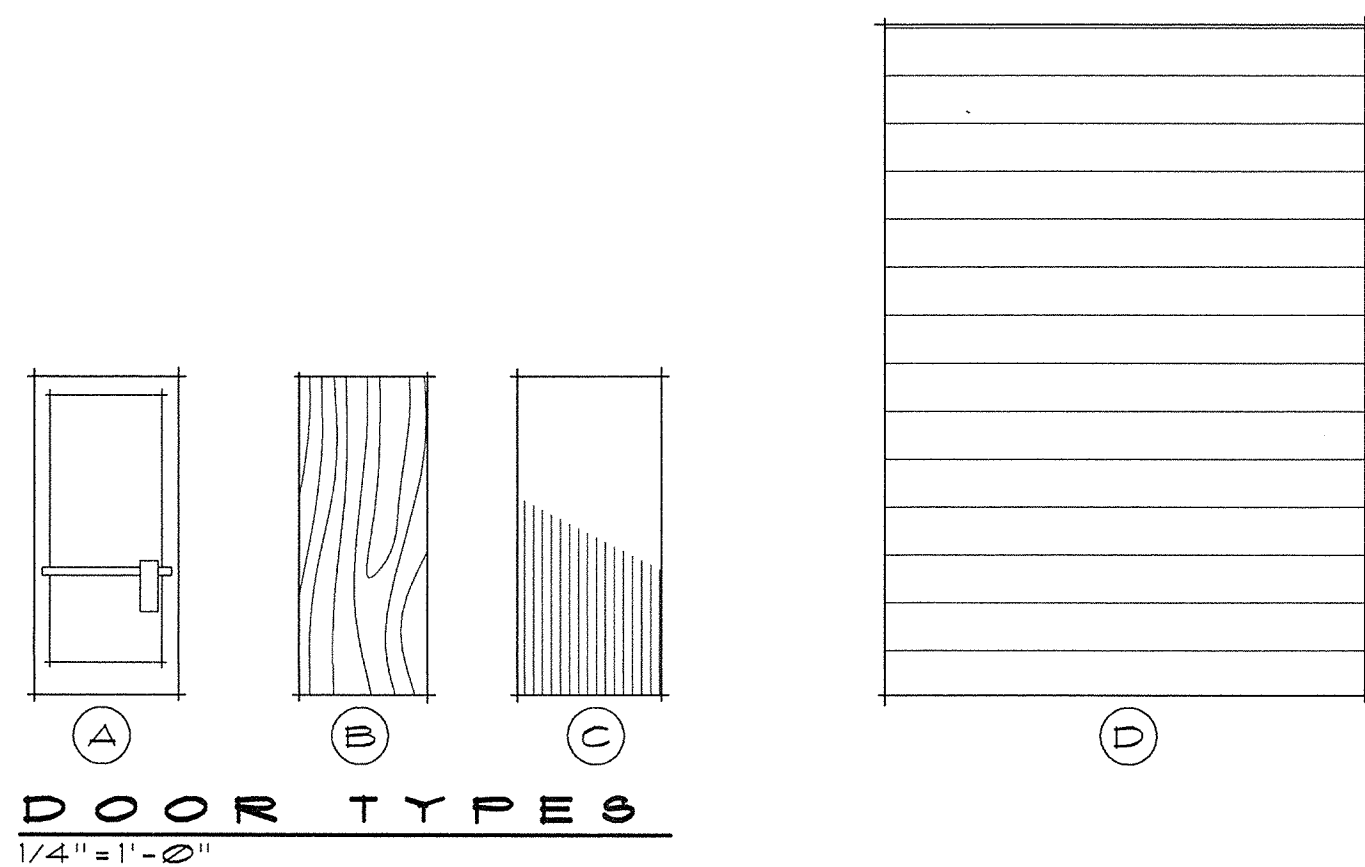
CONTRACTOR SHALL SUBMIT TO THE BUILDING DEPT. SIGNED AND SEALED ENGINEERING FROM THE DOOR MANUFACTURER SHOWING THAT THE DOOR (S) IS CONSTRUCTED TO WITHSTAND THE WIND PRESSURES AS STATED ABOVE.

PROVIDE SPECIFIC NUMERICAL VALUES FOR WIND PRESSURE IN POUNDS PER SQUARE FOOT. 120 MPH REGION BLDG. HT. LESS THAN 20 FT.

SEE TABLE 1606-2A, S.B.C. FOR VELOCITY PRESSURE.

NOTE:

COMMODITIES 12 FEET OR HIGHER ON RACKS OR PALLATIZED, SHALL COMPLY WITH REQUIREMENTS FOR HIGH PILED COMBUSTIBLE STOCK: SMOKE VENTING AND REMOVAL SHALL COMPLY WITH CHF. 36 STANDARD FIRE PREVENTION CODE



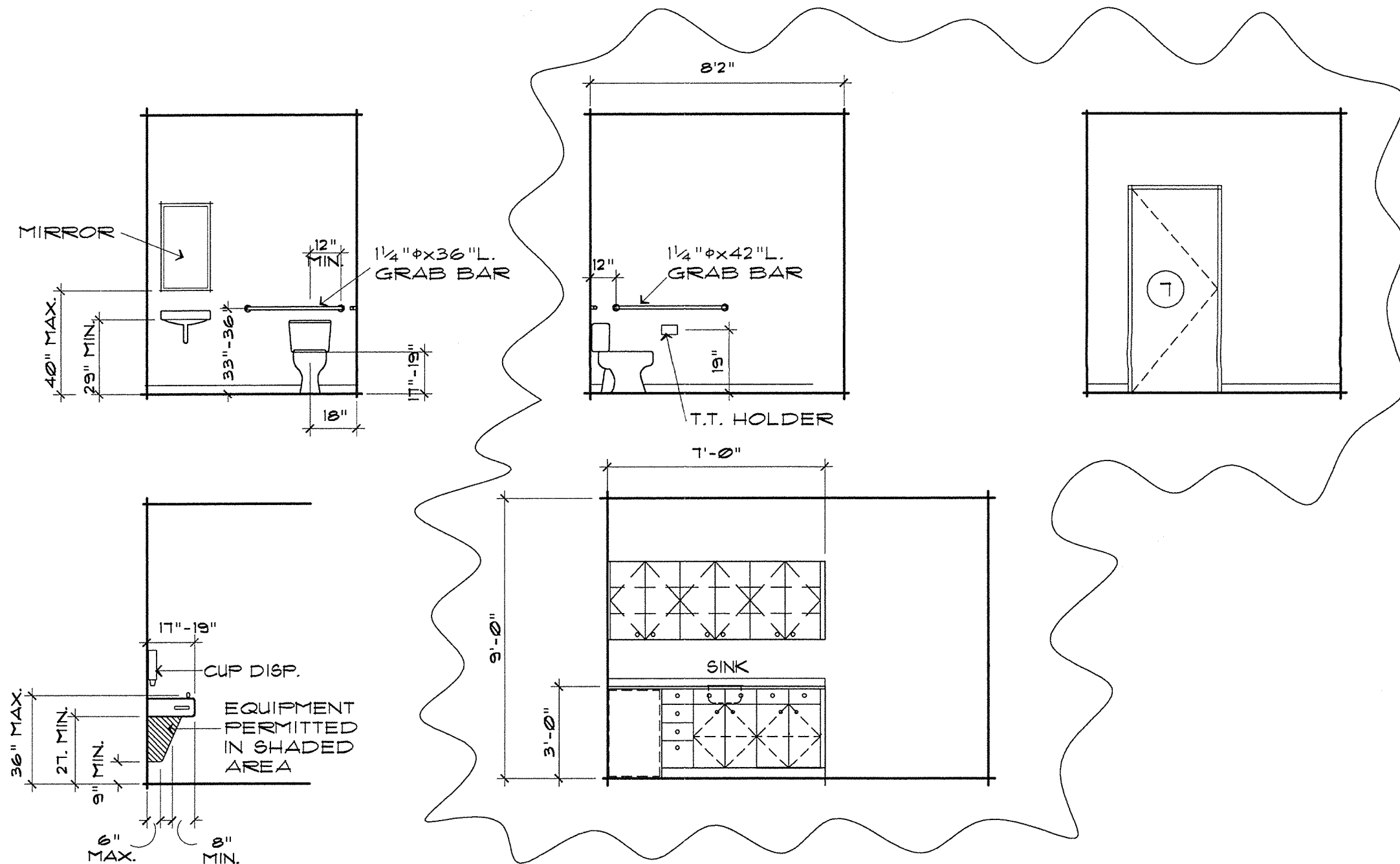
ROOM FINISH SCHEDULE								
No.	ROOM	FLOOR	BASE	WALLS	FINISH	CEILING	FINISH	CLG. HT.
100	RECEPTION	VCT	VINTL	DRYWALL	PAINT	AC. TILE	FACTORY	9'-0"
101	OFFICE	CARPET						
102	OFFICE	CARPET						
103	WOMEN'S	VCT						
104	MEN'S	VCT						
105	BREAK RM.	VCT						
106	PARTS	VCT						
107	HALLWAY	VCT						
108	WAREHOUSE	CONC.						

ALL COLORS AND TEXTURES OF FINISH MATERIALS SELECTED BY OWNER, SUBMIT SAMPLES FOR APPROVAL.

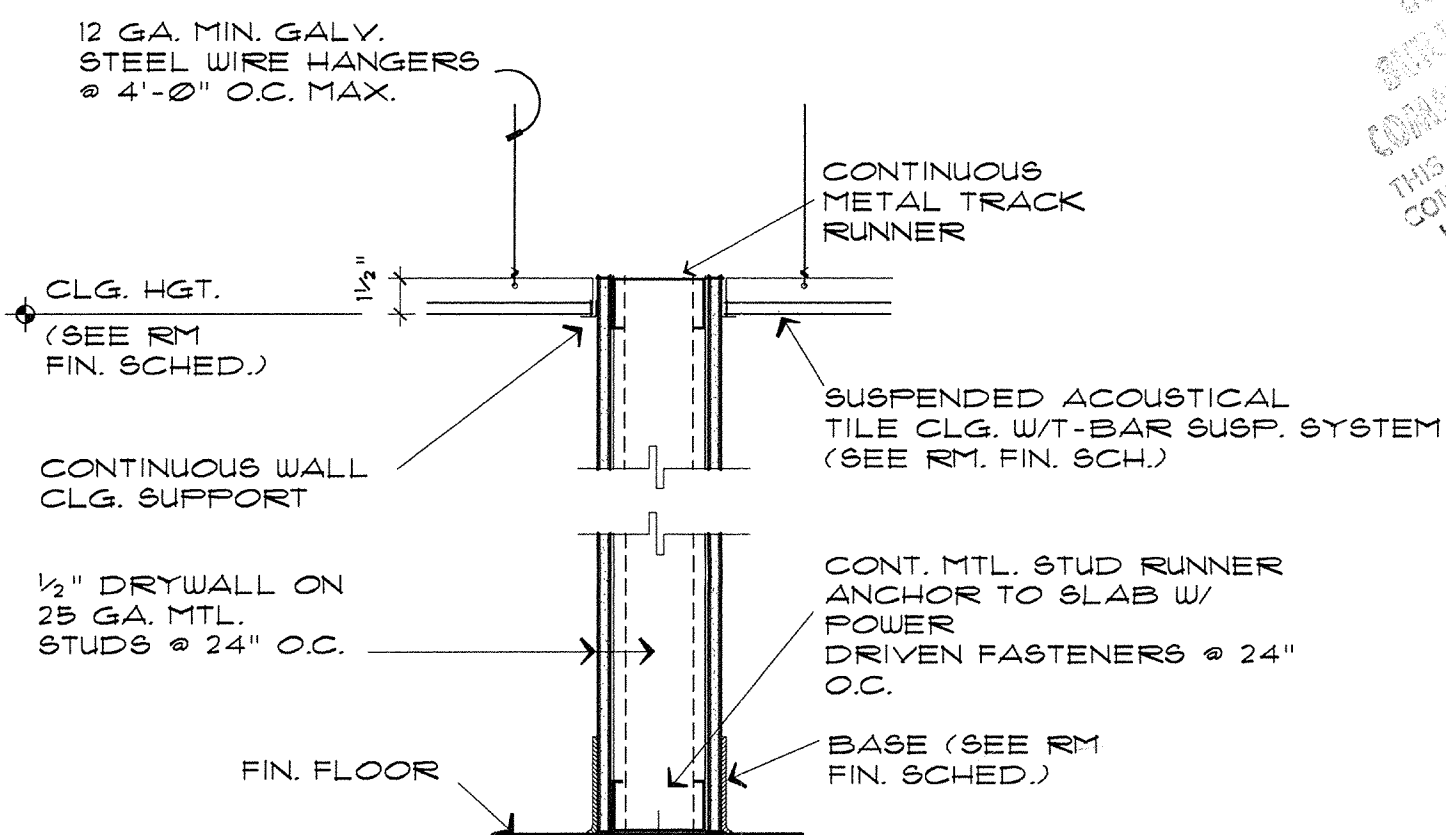
DRYWALL WALLS TO RECEIVE PAINT SHALL HAVE 'ORANGE PEEL' TEXTURE COATING.

V.C. TILE (VINYL COMP. TILE)

AC. TILE: ACOUSTIC T-BAR 2'x4' TILE



MEN'S RESTROOM, DRINKING FNT.  
& CONFERENCE RM. CABINET ELEVATION  
1/4" = 1'-0"



TYP. INTERIOR WALL DETAIL  
1 1/2" = 1'-0"

GENERAL NOTES:

METAL STUDS: FURNISH AND INSTALL ALL STEEL STUDS AS INDICATED ON THE DRAWINGS AND/OR REQUIRED FOR COMPLETE SYSTEM, INCLUDING HANGERS, SUPPORTS, CLIPS, TRACKS, STIFFENERS AND STUD SUPPORTS.

SUBMITTALS: SUBMIT MFG.'S. INSTRUCTIONS FOR SECURING STUDS TO TRACKS AND FRAMING CONNECTIONS. ANCHORAGE SHALL NOT BE LESS THAN ANY DETAIL OR DESCRIPTION INDICATED ON THE DRAWINGS OR RECOMMENDED BY THE MANUFACTURER.

SUBMIT SHOP DRAWINGS TO ARCHITECT FOR APPROVAL (4 COPIES): ALL STRUCTURAL CONNECTIONS AND/OR RELATED STUD DETAILS SHALL BE SIGNED AND SEALED BY AND ENGINEERING REGISTERED IN THE STATE OF FLORIDA.

ACCEPTABLE MANUFACTURERS: INRYCOMILCOR, NATIONAL GYPSUM CO., WHEELING CORRUGATED CO., KEENE CO.

MATERIALS: STUDS: ASTM C645, SIZES AS INDICATED ON DRAWINGS

1-1/2" CHANNEL STIFFENERS: COLD ROLLED TYPE

TRACK: ASTM C645, 2329, COLD ROLLED

SCREWS: GOLD BOND TYPE S-12, ASTM C954, OR AS OTHERWISE CALLED FOR ON THE DRAWINGS.

ERECTION: INSTALL METAL STUDS AND STUD FRAMING PER MFG.'S. PUBLISHED SPECS. BRICING AND WIRE TYING OF WALL STUDS NOT PERMITTED. INSTALL STUDS PLUMB AND/OR LEVEL TO ENSURE TRUE AND FLAT SURFACES FOR FINISH MATERIALS. DOUBLE STUDS AS REQUIRED AT DOOR OPENINGS.

REVISED DATE  
12.6.00

REVISIONS

MOBICARE  
THORPE ROAD  
ORLANDO, FL.

PROJECT

FLOOR PLAN

DRAWING

SCALE

DRAWN FJR

CHECK

PROJECT NO. 0041

DATED 11.6.00

HERBERT  
L. BANKS  
ARCHITECT, P.A.

2236 A WINTER WOODS BLVD.  
HOWELL PARK EXECUTIVE CENTER  
WINTER PARK, FLORIDA 32792  
(407) 678-7745